



# M12 FQID

SERVICE PARTS DIAGRAM

TTI Model Number: 018 370 003, 010, 013

M12 FUEL™ SURGE™ HYDRAULIC DRIVER

Bulletin Date:

Dec-20

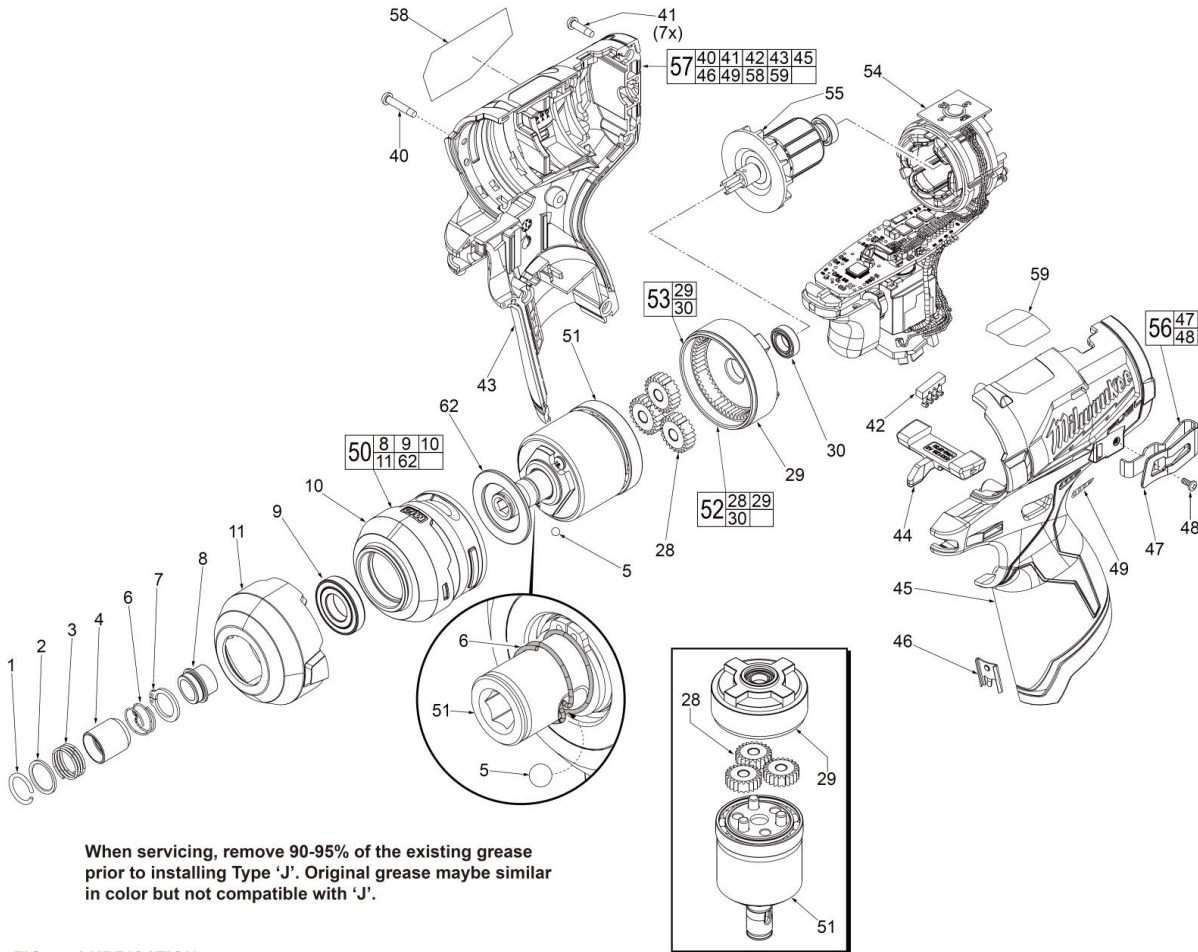
Starting Serial Number:

VERSION A - H2019

00  
0

**EXAMPLE:**

Component Parts (Small #)  
Are Included When Ordering  
The Assembly (Large #).



When servicing, remove 90-95% of the existing grease prior to installing Type 'J'. Original grease maybe similar in color but not compatible with 'J'.

FIG. LUBRICATION  
(Type 'J' Grease, Item 1200):

- 10 Coat anvil opening in the front of the gear case with grease.
- 51 Lightly coat front washer surface of Pulse Unit (51) with grease, place a dab in the ball slot of anvil.
- 28,53 Lightly coat the inside gear teeth of ring gear end cap (53) and the gear teeth of the planet gears (28) with grease.
- 55 Coat pinion of rotor assembly (55) with grease.

**NOTE:**

Assemble the three planet gears (28) on posts of pulse unit (51). Place gearcase end cap (53) onto pulse unit. Turn anvil on pulse unit to rotate gears to seat end cap properly. Align tab on end cap with notch in the gear case to install.



1200





# M12 FQID

SERVICE PARTS LIST

TTI Model Number: 018 370 003, 010, 013

**M12 FUEL™ SURGE™ HYDRAULIC DRIVER**

**Bulletin Date:**

**Dec-20**

**Starting Serial Number:**

**VERSION A - H2019**

ITEM	PART NUMBER	PART DESCRIPTION	QTY (PCS)
1	690258001	C' RETAINING RING	1
2	690266005	DOUBLE CHAMFER WASHER	1
3	690261001	SPRING	1
4	690260070	SLEEVE	1
5	690268001	3.5MM STEEL BALL	1
6	693384004	ANVIL SPRING	1
7	637242002	RETAINING RING	1
8	693171036	WASHER	1
9	681758001	BALL BEARING	1
10	643591001	FRONT GEAR CASE WITH BALL BEARING	1
11	564981001	GEAR CASE COVER	1
28	611575034	PLANETARY GEAR	3
29	611574038	RING GEAR	1
30	681949001	BALL BEARING	1
40	660187012	M3 X 22MM SCREW	1
41	662456001	M3 X 16MM SCREW	7
42	533197001	LIGHT PIPE	1
43	-	HOUSING COVER - RIGHT HOUSING	1
44	533128001	FORWARD/REVERSE SHUTTLE	1
45	-	HOUSING SUPPORT - LEFT HOUSING	1
46	631542003	HOUSING CLIP	1
47	639391001	BELT CLIP	1
48	661703002	M2.5 X 6MM SCREW	1
49	941312019	FUEL GAUGE LABEL	1
50	208370008	FRONT GEAR CASE ASSEMBLY	1
51	208370009	PULSE UNIT (SEALED SYSTEM)	1
52	208370006	GEAR CASE END CAP ASSEMBLY WITH GEARS	1
53	208370007	GEAR CASE END CAP WITH BALL BEARING	1
54	208370002	ELECTRONICS ASSEMBLY	1
55	208370003	ROTOR ASSEMBLY <i>018370003, 010 ASIA VERSION</i>	1
55	208370014	ROTOR ASSEMBLY <i>018370013 ONLY JP VERSION</i>	1
56	204518001	BELT CLIP KIT	1
57	204370008	HOUSING KIT <i>018370003, 010 ASIA VERSION</i>	1
57	204370010	HOUSING KIT <i>018370013 ONLY JP VERSION</i>	1

	<h1>M12 FQID</h1> <p>SERVICE PARTS LIST</p>	<b>Bulletin Date:</b> <b>Dec-20</b>
	<b>TTI Model Number: 018 370 003, 010, 013</b>	<b>Starting Serial Number:</b> <b>VERSION A - H2019</b>
<b>M12 FUEL™ SURGE™ HYDRAULIC DRIVER</b>		

ITEM	PART NUMBER	PART DESCRIPTION	QTY (PCS)
58	941049667	RATING LABEL <i>018370003, 010 ASIA VERSION</i>	1
58	941050565	RATING LABEL <i>018370013 ONLY JP VERSION</i>	1
59	941312023	WARNING LABEL	1
60	204583001	BLOW MOLDED CARRYING CASE <i>018370010 ASIA, 013 JP VERSION</i>	1
62	534246003	NYLON WASHER	1
1200	-	TYPE J GREASE	1



# M12 FQID

SERVICE INSTRUCTION

TTI Model Number: 018 370 003, 010, 013

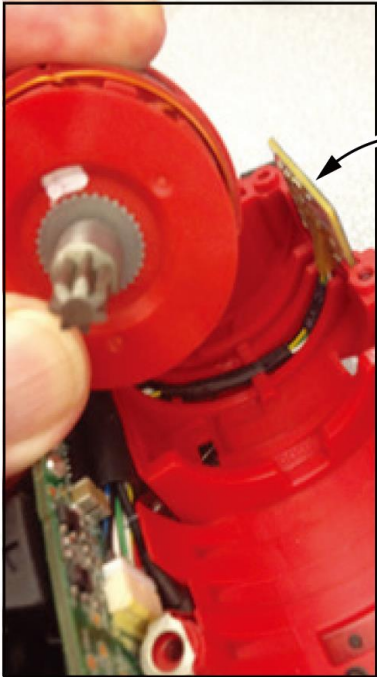
**M12 FUEL™ SURGE™ HYDRAULIC DRIVER**

**Bulletin Date:**

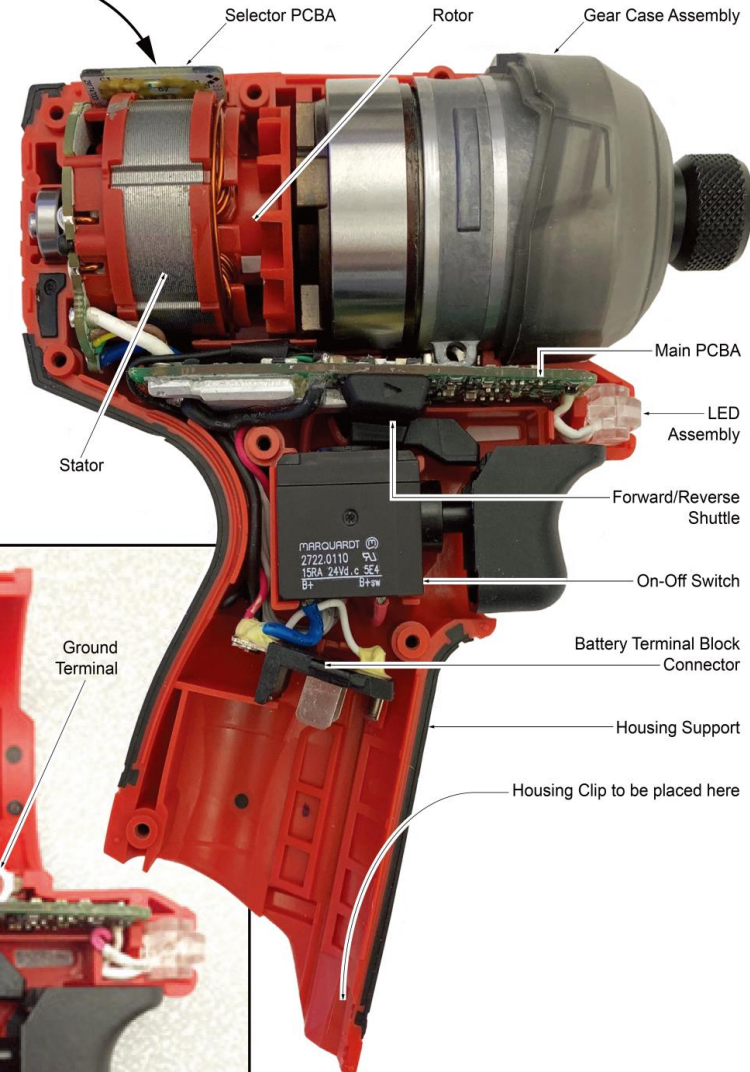
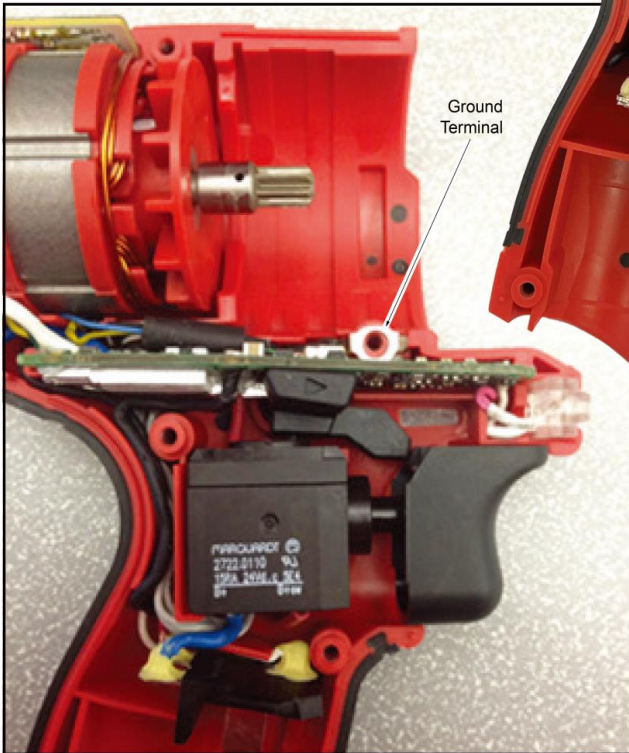
**Dec-20**

**Starting Serial Number:**

**VERSION A - H2019**



Prior to installing Stator/Rotor Assemblies, place the Selector PCBA into the slotted Housing Support cavity. Press wires into channel as shown. Carefully place Stator/Rotor Assemblies into Housing Support, being sure all components are firmly and squarely seated.



Prior to installing the Gear Case Assembly, be sure all elements of the Electronics Assembly are seated properly (Stator, Main PCBA, Selector PCBA, On-Off Switch, LED Assembly and Battery Terminal Block Connector). Be sure the Grounding Terminal is in place and that all wires are pressed down into all wire traps and channels. Check to assure that wires will not interfere with moving parts.

Prior to installing the Housing Cover, place Forward/Reverse Shuttle onto On-Off Switch and through Housing Support opening. Check to assure that wires will not be pinched.

Secure the Housing Cover to the Housing Support with seven M3 x 16mm ST T-10 Screws. Be sure to replace the Housing Clip at the bottom of the battery opening.