



M18 CHM

SERVICE PARTS DIAGRAM

TTI Model Number: 018 128 017 DG9, 018 DG9, 021 DG9

M18 FUEL™ 5KG SDS MAX COMBI HAMMER

Bulletin Date:

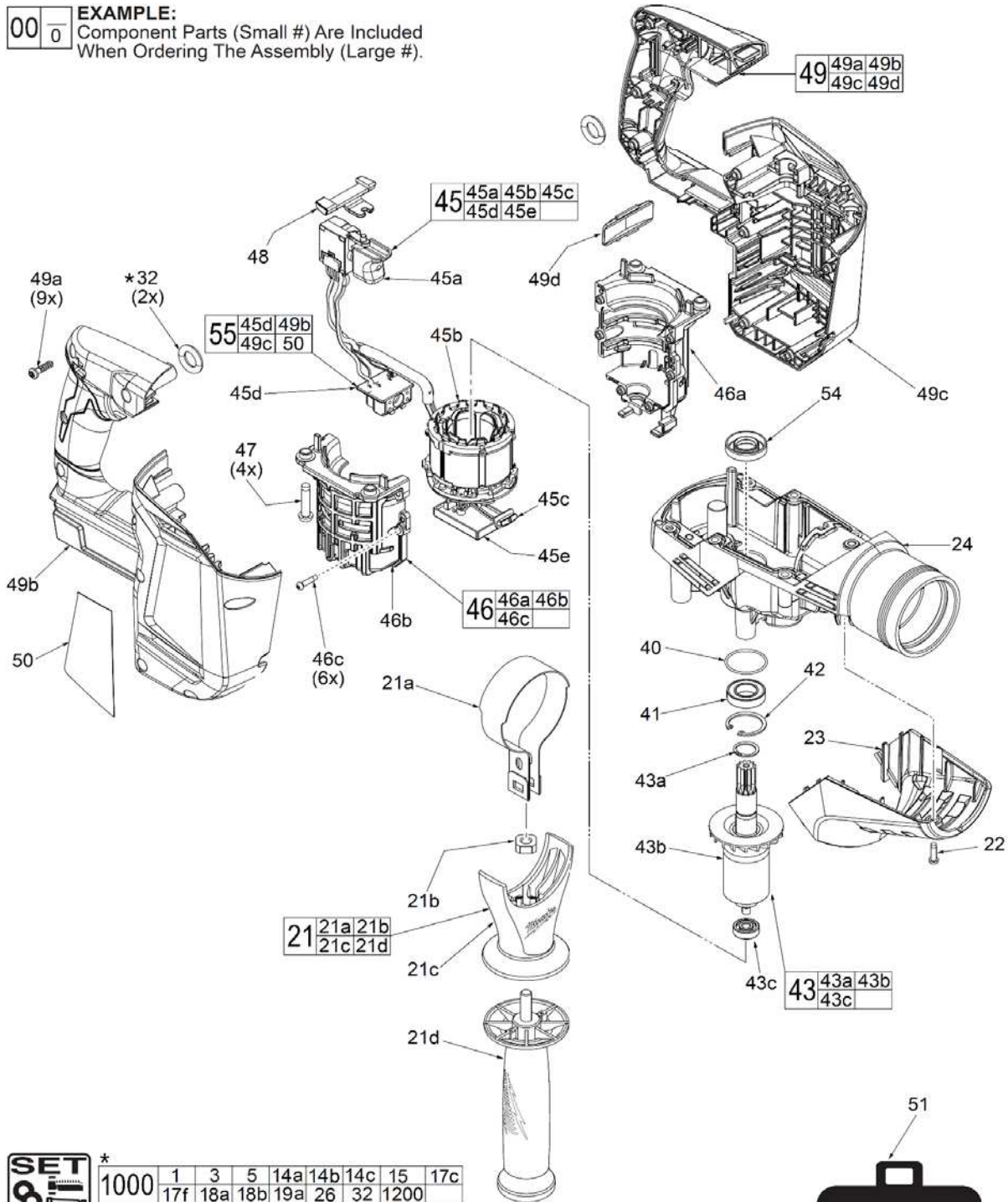
May-20

Starting Serial Number:

VERSION A - L2016

00 0

EXAMPLE:
Component Parts (Small #) Are Included
When Ordering The Assembly (Large #).



1000	1	3	5	14a	14b	14c	15	17c
	17f	18a	18b	19a	26	32	1200	



1200	2000	2001	2002	2003	2004
------	------	------	------	------	------





M18 CHM

SERVICE PARTS DIAGRAM

TTI Model Number: 018 128 017 DG9, 018 DG9, 021 DG9

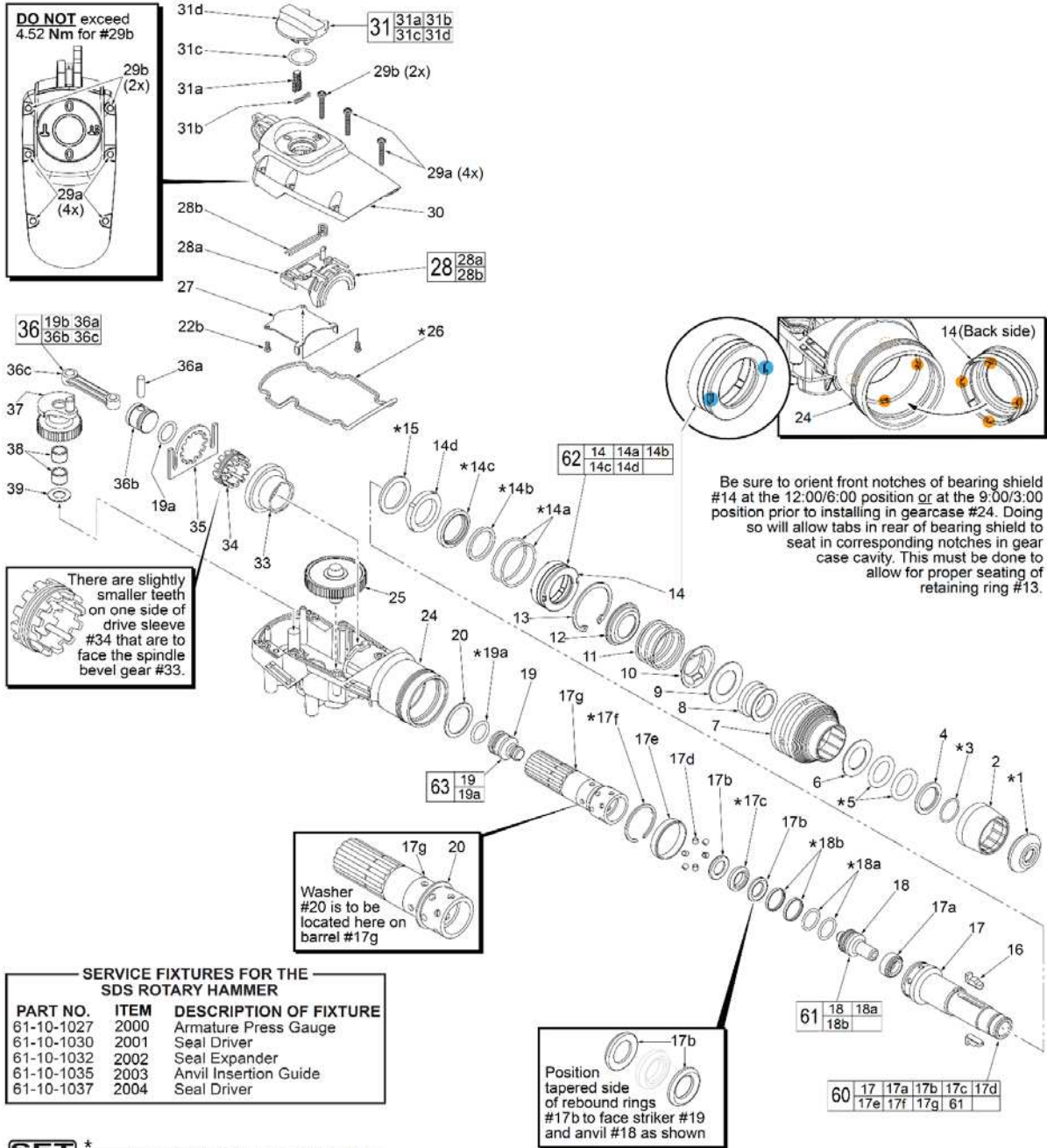
M18 FUEL™ 5KG SDS MAX COMBI HAMMER

Bulletin Date:

May-20

Starting Serial Number:

VERSION A - L2016



SERVICE FIXTURES FOR THE SDS ROTARY HAMMER

PART NO.	ITEM	DESCRIPTION OF FIXTURE
61-10-1027	2000	Armature Press Gauge
61-10-1030	2001	Seal Driver
61-10-1032	2002	Seal Expander
61-10-1035	2003	Anvil Insertion Guide
61-10-1037	2004	Seal Driver

SET 8

*1000	1	3	5	14a	14b	14c	15	17c
	17f	18a	18b	19a	26	32	1200	





M18 CHM

SERVICE PARTS LIST

TTI Model Number: 018 128 017 DG9, 018 DG9, 021 DG9

M18 FUEL™ 5KG SDS MAX COMBI HAMMER

Bulletin Date:

May-20

Starting Serial Number:

VERSION A - L2016

ITEM	PART NUMBER	PART DESCRIPTION	QTY (PCS)
1	563067001	RUBBER DUST SHIELD	1
2	523854001	FRONT LATCH CONE	1
3	692385001	RETAINING RING	1
4	633235001	WASHER	1
5	563028001	RUBBER O RING	2
6	634002001	FLAT WASHER - STEEL	1
7	523853001	SLIDING COLLAR	1
8	693054001	LOCKING SLEEVE	1
9	634153001	FLAT WASHER - STEEL	1
10	633234001	FRONT SPRING RETAINER	1
11	693006001	SPRING	1
12	633152001	REAR SPRING RETAINER	1
13	633172001	RETAINING RING	1
14	641713001	BEARING SHIELD	1
14a	562719001	RUBBER O-RING	1
14b	902495001	FELT SEAL RING	2
14c	303525001	LIP SEAL ASSEMBLY	1
14d	692388001	BEARING RING	1
15	562720001	RUBBER O-RING	1
16	692446001	LATCHES	2
17	621226001	SDS-MAX SPINDLE DRIVER	1
17a	692894001	BRAKE RING	1
17b	692814001	REBOUND RING	2
17c	562814001	RUBBER BACK PRESSURE RING	1
17d	692537001	SPINDLE SLEEVE PIN (SET)	14
17e	693004001	STEEL RING	1
17f	633926001	RETAINING RING - STEEL	1
17g	622069001	SPINDLE SLEEVE	1
18	693287001	ANVIL	1
18a	562833002	RUBBER O-RING (NEW)	2
18a	562833001	RUBBER O-RING (OLD)	2
18b	562743001	SEAL	2
19	693244001	STRIKER	1
19a	562310001	RUBBER O-RING	2
20	633319001	STEEL WASHER	1
21	201968001	SIDE HANDLE ASSEMBLY	1



M18 CHM

SERVICE PARTS LIST

TTI Model Number: 018 128 017 DG9, 018 DG9, 021 DG9

M18 FUEL™ 5KG SDS MAX COMBI HAMMER

Bulletin Date:

May-20

Starting Serial Number:

VERSION A - L2016

ITEM	PART NUMBER	PART DESCRIPTION	QTY (PCS)
21a	633161001	AUXILIARY HANDLE CLAMP	1
21b	661390001	SQUARE NUT - STEEL	1
21c	520381001	AUXILIARY HANDLE BRACKET	1
21d	303610001	AUXILIARY HANDLE ASSEMBLY	1
22a	661420001	SCREW SET	1
22b	661420001	SCREW SET	2
23	528998001	FRONT HOUSING	1
24	203721001	GEAR BOX ASSEMBLY	1
25	208012001	CLUTCH GEAR ASSEMBLY	1
26	560812001	RUBBER SEAL FOR GEARCASE COVER	1
27	633160001	CLAMP PLATE	1
28	201967001	FORK ASSEMBLY	1
28a	520384001	FORK	1
28b	693540001	FORK ASSEMBLY SPRING	1
29a	661419001	SCREW SET	4
29b	661419001	SCREW SET	2
30	641572006	GEAR CASE COVER	1
31	201974001	SELECTOR KNOB ASSEMBLY	1
31a	563066001	RUBBER PLUG	1
31b	693539001	SPRING	1
31c	560810001	RUBBER O-RING	1
31d	305659001	SELECTOR KNOB WITH STEEL PIN INSERT	1
32	563065001	RUBBER O-RING	2
33	611128002	SPINDLE BEVEL GEAR	1
34	692449001	DRIVE SLEEVE	1
35	611144001	LOCKING PLATE	1
36	201980001	PISTON AND CON-ROD ASSEMBLY	1
36a	692382001	WRIST PIN	1
36b	641746001	PISTON	1
36c	520390001	CON-ROD	1
37	208016001	CRANK GEAR	1
38	681419001	NEEDLE BEARING	2
39	633226005	WASHER	1
40	562714001	RUBBER O-RING	1



M18 CHM

SERVICE PARTS LIST

TTI Model Number: 018 128 017 DG9, 018 DG9, 021 DG9

M18 FUEL™ 5KG SDS MAX COMBI HAMMER

Bulletin Date:

May-20

Starting Serial Number:

VERSION A - L2016

ITEM	PART NUMBER	PART DESCRIPTION	QTY (PCS)
41	681771001	BALL BEARING	1
42	633154001	RETAINING RING	1
43	208013001	ARMATURE ASSEMBLY	1
43a	636646001	RETAINING RING	1
43b	298099003	ROTOR	1
43c	681400001	BALL BEARING	1
45	208014001	PCBA AND MOTOR FIELD ASSEMBLY	1
45a	-	ON-OFF SWITCH	1
45b	311407001	STATOR ASSEMBLY	1
45c	-	LED ASSEMBLY	1
45d	307300001	TERMINAL BLOCK (SEE ITEM 55)	1
45e	280160277	PCBA	1
46	203725001	MOTOR HOUSING ASSEMBLY	1
46a	-	MOTOR HOUSING INSULATOR HALVE - LEFT	1
46b	-	MOTOR HOUSING INSULATOR HALVE - RIGHT	1
46c	660031017	SCREW SET	6
47	661409004	SCREW SET	4
48	591472001	LOCK / UNLOCK SHUTTLE	1
49	203726001	HANDLE ASSEMBLY	1
49a	661044001	SCREW SET	9
49b	-	HOUSING HALVE - RIGHT (COVER)	1
49c	-	HOUSING HALVE - LEFT (SUPPORT)	1
49d	351051001	FUEL™ LOGO PLATE	1
50	941046776	RATING LABEL	1
51	307153003	BLOW MOULD CASE ASSEMBLY	1
54	307783001	MOTOR SEAL	1
55	203915001	HANDLE WITH TERMINAL BLOCK ASSEMBLY	1
60	201972001	SDS-MAX SPINDLE ASSEMBLY	1
61	201965001	ANVIL ASSEMBLY	1
62	201964001	BEARING SHIELD ASSEMBLY	1
63	201966001	STRIKER ASSEMBLY	1
1000	204582004	M18 CHM SERVICE KIT	1
1200	-	TYPE Q2 GREASE 2.8OZ/80G Tube	1
2000	61-10-1027	ARMATURE PRESS GAUGE	1
2001	61-10-1030	SEAL DRIVER	1
2002	61-10-1032	SEAL EXPANDER	1
2003	61-10-1035	ANVIL INSERTION GUIDE	1
2004	61-10-1037	SEAL DRIVER	1



M18 CHM

SERVICE INSTRUCTION

TTI Model Number: 018 128 017 DG9, 018 DG9, 021 DG9

M18 FUEL™ 5KG SDS MAX COMBI HAMMER

Bulletin Date:

May-20

Starting Serial Number:

VERSION A - L2016

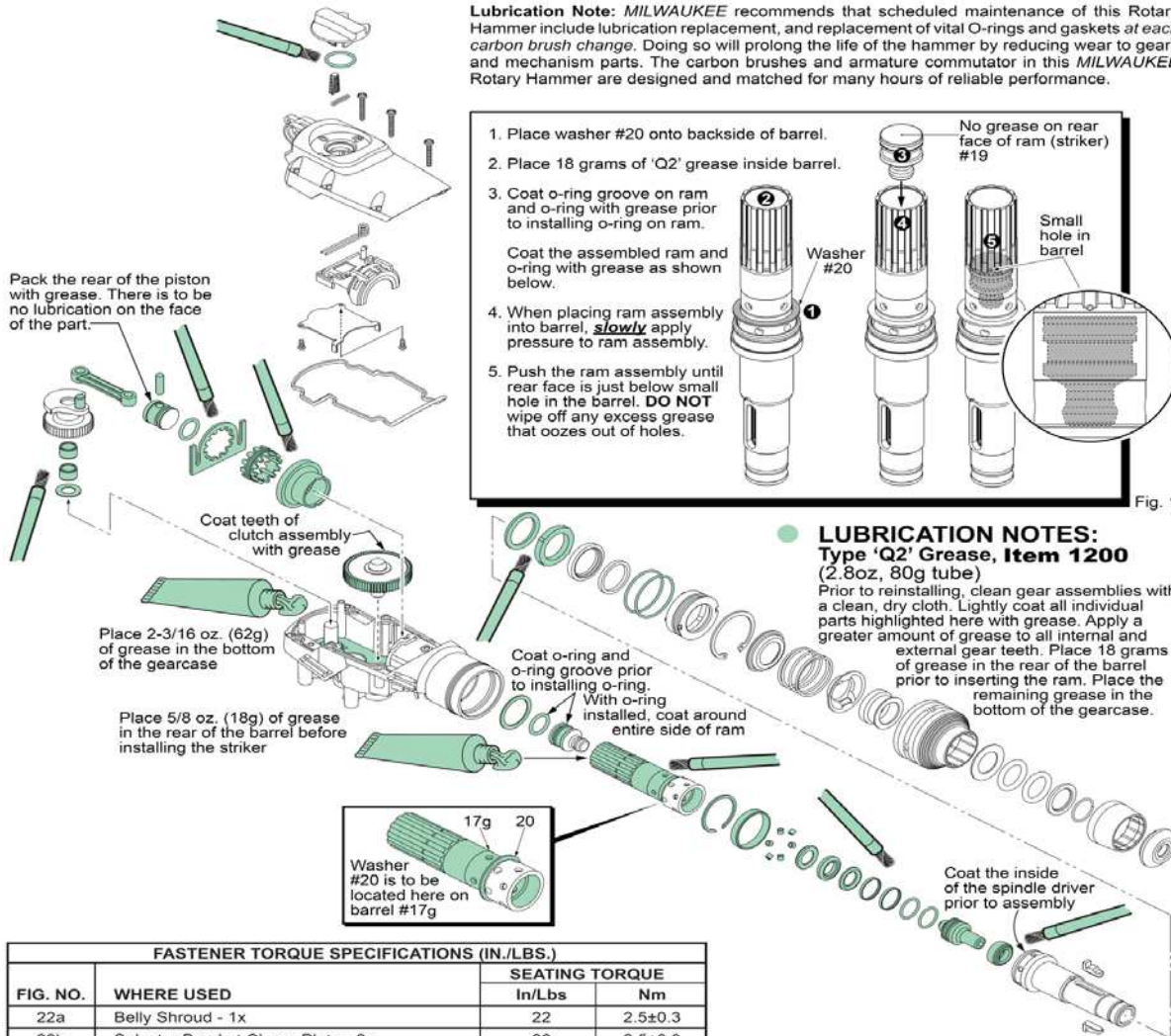


Fig. 1

FASTENER TORQUE SPECIFICATIONS (IN./LBS.)			
FIG. NO.	WHERE USED	SEATING TORQUE	
		In/Lbs	Nm
22a	Belly Shroud - 1x	22	2.5±0.3
22b	Selector Bracket Clamp Plate - 2x	22	2.5±0.3
29a	Gearcase Cover (middle & front positions - 4x)	52	5.9±0.3
29b	Gearcase Cover (rear position - 2x)	38	4.3±0.3
46c	Motor Housing Insulator - 6x	10	1.2±0.2
47	Motor Housing Insulator - 4x	50	5.7±0.3
49a	Housing Halve - Right (Cover) - 9x	25	2.9±0.3



M18 CHM

SERVICE INSTRUCTION

TTI Model Number: 018 128 017 DG9, 018 DG9, 021 DG9

M18 FUEL™ 5KG SDS MAX COMBI HAMMER

Bulletin Date:
May-20

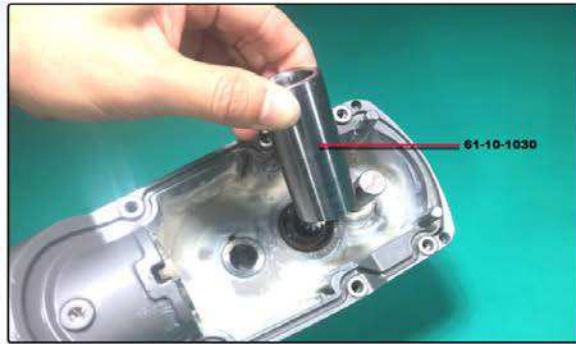
Starting Serial Number:

VERSION A - L2016

61-10-1032 Seal Expander



61-10-1030 Seal Driver



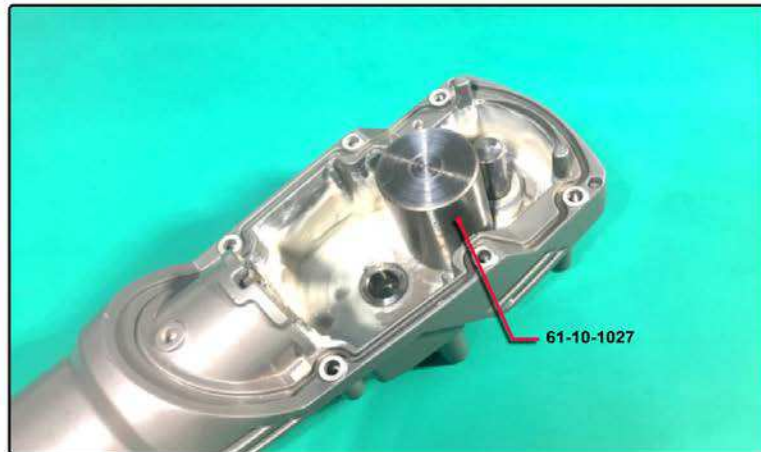
61-10-1037 Seal Driver



61-10-1035 Anvil Insertion Guide



61-10-1027
Armature Press Gauge





M18 CHM

SERVICE INSTRUCTION

TTI Model Number: 018 128 017 DG9, 018 DG9, 021 DG9

M18 FUEL™ 5KG SDS MAX COMBI HAMMER

Bulletin Date:

May-20

Starting Serial Number:

VERSION A - L2016

