



# M18 BMS20

SERVICE PARTS DIAGRAM

TTI Model Number: 018 118 022

M18™ COMPACT METAL SHEAR

Bulletin Date:

Mar-20

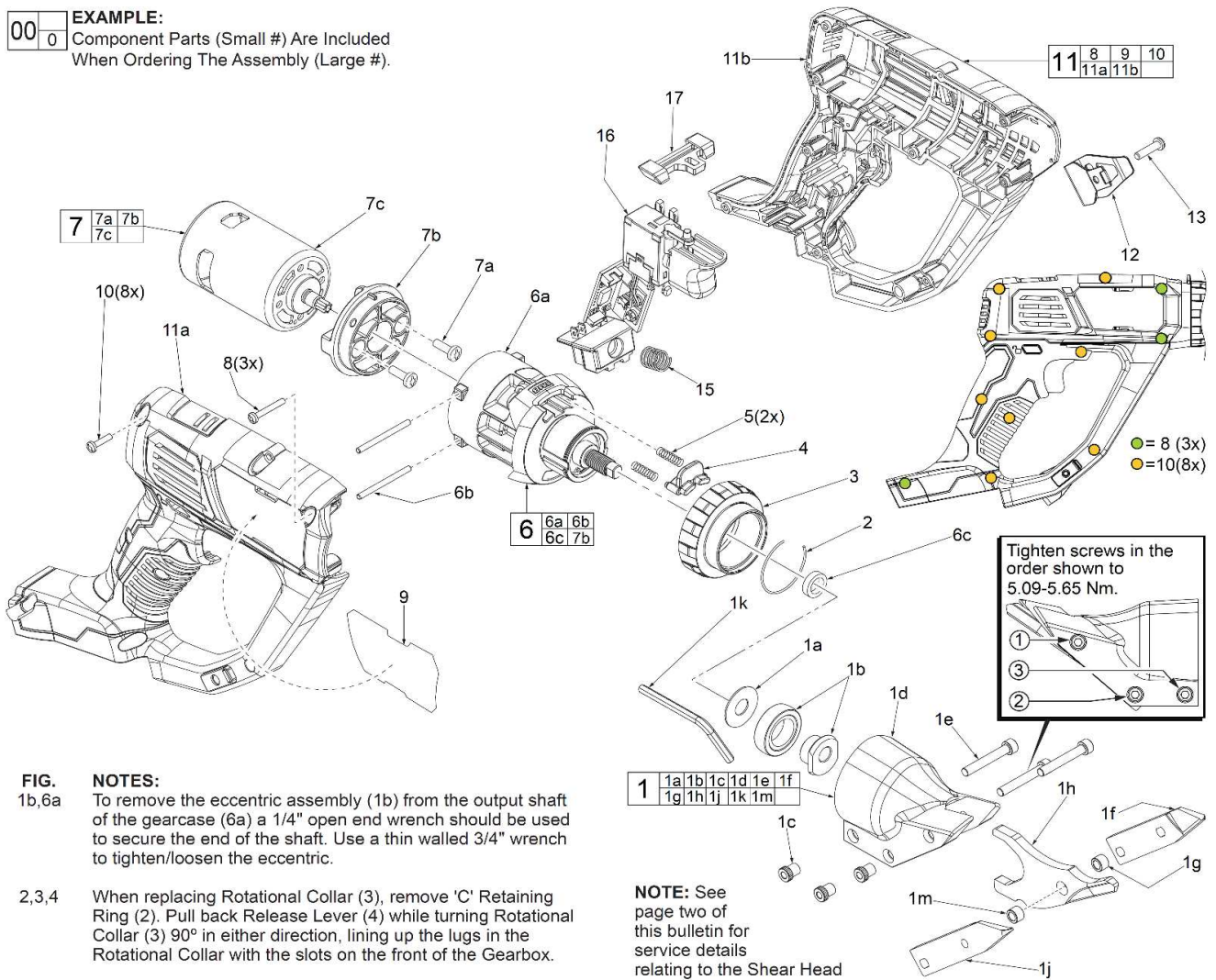
Starting Serial Number:

VERSION A - K2015

**EXAMPLE:**  

00	0
----	---

 Component Parts (Small #) Are Included  
 When Ordering The Assembly (Large #).



- FIG. 1b,6a** **NOTES:**  
 To remove the eccentric assembly (1b) from the output shaft of the gearcase (6a) a 1/4" open end wrench should be used to secure the end of the shaft. Use a thin walled 3/4" wrench to tighten/loosen the eccentric.
- 2,3,4 When replacing Rotational Collar (3), remove 'C' Retaining Ring (2). Pull back Release Lever (4) while turning Rotational Collar (3) 90° in either direction, lining up the lugs in the Rotational Collar with the slots on the front of the Gearbox.
- 3,4,5,6a Place a light film of Type 'E' Grease, Item 1200 to the inside diameter of the Rotational Collar (3), to the front neck of Gearbox (6a), to the underside of the Release Lever (4) and the two Release Lever Springs (5).
- 6,7,7b Service replacement gearcase assembly (6) comes with a motor mount plate (7b) that must be removed and discarded when servicing. A motor mount plate already exists on the motor assembly (7).

**NOTE:** See page two of this bulletin for service details relating to the Shear Head Assembly, No. 203199001





# M18 BMS20

SERVICE PARTS LIST

TTI Model Number: 018 118 022

M18™ COMPACT METAL SHEAR

Bulletin Date:

**Mar-20**

Starting Serial Number:

VERSION A - K2015

ITEM	PART NUMBER	PART DESCRIPTION	QTY (PCS)
1	203199001	SHEAR HEAD ASSEMBLY	1
1a	-	WASHER	1
1b	-	ECCENTRIC ASSEMBLY	1
1c	-	KNURLED INSERT	3
1d	-	SHEAR HOUSING	1
1e	-	10-32 X 1-1/4" SCREW	3
1f	-	BLADE - LEFT SIDE	1
1g	-	BUSHING	1
1h	-	BLADE - CENTER	1
1j	-	BLADE - RIGHT SIDE	1
1k	-	5/32" HEX ALLEN WRENCH	1
1m	-	FRONT BUSHING	1
2	694066001	"C" RETAINING RING	1
3	642415001	ROTATIONAL COLLAR	1
4	642400001	ROTATIONAL HEAD RELEASE LEVER	1
5	694499001	SPRING	2
6	203197001	GEARBOX ASSEMBLY	1
6a	-	GEARBOX	1
6b	-	2.5MM X 47MM STEEL PIN	2
6c	634335003	WASHER (SPACER)	1
7	203041002	MOTOR ASSEMBLY	1
7a	-	M5.0 X 12MM SCREW	2
7b	-	MOTOR MOUNT PLATE	1
7c	-	MOTOR	1
8	660837003	M3.0 X 22.5MM SCREW	3
9	941048056	SERVICE NAMEPLATE	1
10	660851001	M3.0 X 16MM SCREW	8
11	203042002	HANDLE HOUSING ASSEMBLY	1
11a	-	HANDLE HALVE - RIGHT (COVER)	1
11b	-	HANDLE HALVE - LEFT (SUPPORT)	1
12	635042001	BELT CLIP	1
13	660284008	6-32 X .75" SCREW	1
15	691093001	COMPRESSION SPRING	1
16	203044001	ELECTRONICS ASSEMBLY	1
17	526710001	LOCK-OFF SHUTTLE	1
1200	-	TYPE E GREASE	1
2000	61-30-0300	SPREADER WRENCH	1
2001	61-30-0310	SPREADER WRENCH	1



# M18 BMS20

SERVICE INSTRUCTION

TTI Model Number: 018 118 022

M18™ COMPACT METAL SHEAR

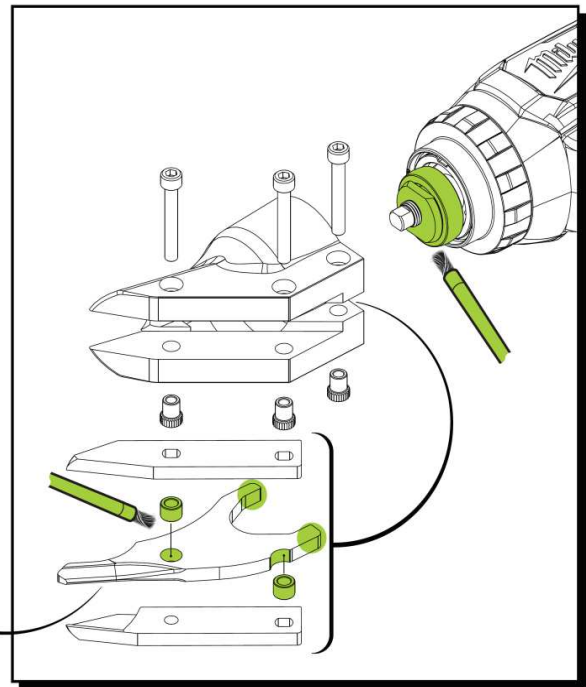
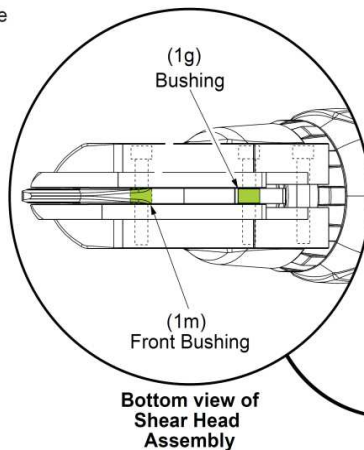
Bulletin Date:

Mar-20

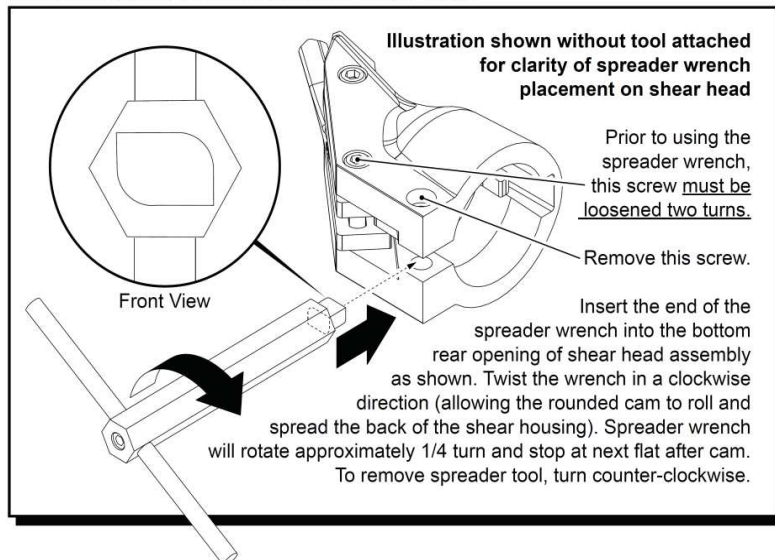
Starting Serial Number:

VERSION A - K2015

When servicing **Shear Head Assembly No. 203199001** pay close attention to the placement of the Bushings. One is to be placed in the hole of the Center Blade and is to be held in place with the front most screw on the Shear Housing. The other bushing is to be located below the small concave notch of the Center Blade and is to be secured with the middle screw on the Shear Housing. Prior to assembly, it is recommended to use Type 'E' Grease, Item 1200 on the following areas: Place a dab of grease in the pivot (bushing) hole and on the bushing notch of the Center Blade. Place a dab of grease on the rear flats of the Center Blade. Coat both bushings completely with grease. Place a liberal amount of grease on the entire Eccentric Assembly.



## REMOVING SHEAR HEAD ASSEMBLY FROM TOOL



### SERVICE TOOLS:

Spreader Wrench No. 61-30-0300  
for 14 Gauge Shear Head  
used on Shear

for 18 Gauge Shear Head  
used on Shear

Spreader Wrench No. 61-30-0310  
for 18 Gauge Shear Head  
used on Shears



# M18 BMS20

SERVICE INSTRUCTION

TTI Model Number: 018 118 022

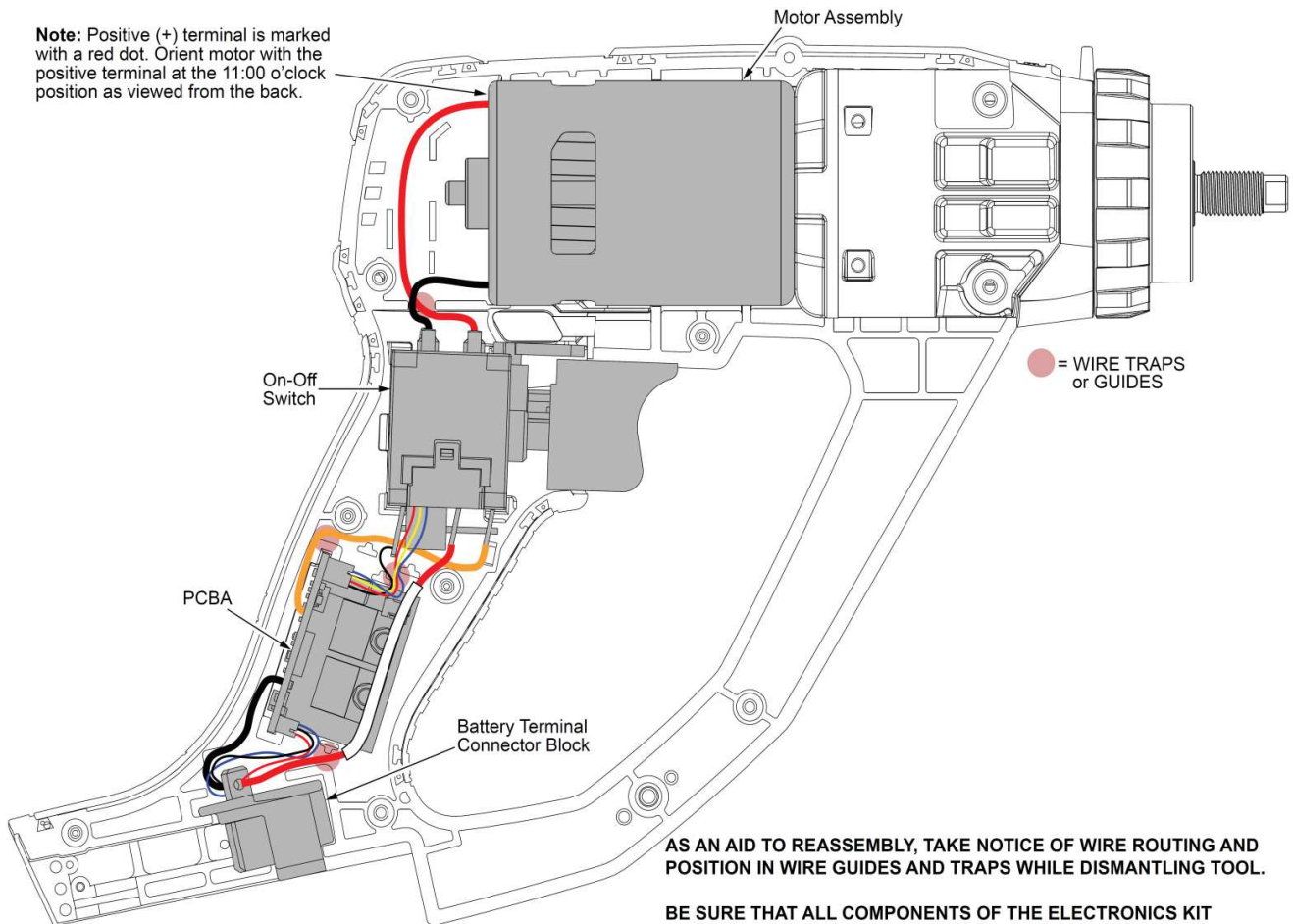
M18™ COMPACT METAL SHEAR

Bulletin Date:

Mar-20

Starting Serial Number:

VERSION A - K2015



AS AN AID TO REASSEMBLY, TAKE NOTICE OF WIRE ROUTING AND POSITION IN WIRE GUIDES AND TRAPS WHILE DISMANTLING TOOL.

BE SURE THAT ALL COMPONENTS OF THE ELECTRONICS KIT ARE SEATED FIRMLY AND SQUARELY IN THE HANDLE RECESSES.

AVOID PINCHED WIRES, BE SURE THAT ALL WIRES AND SLEEVES ARE PRESSED COMPLETELY DOWN IN WIRE GUIDES AND TRAPS.

PRIOR TO INSTALLING THE HANDLE COVER ONTO THE HANDLE SUPPORT, BE SURE THAT THERE ARE NO INTERFERENCES.