



M18 BBL

SERVICE PARTS DIAGRAM

TTI Model Number: 016 042 201

M18 COMPACT BATTERY BLOWER

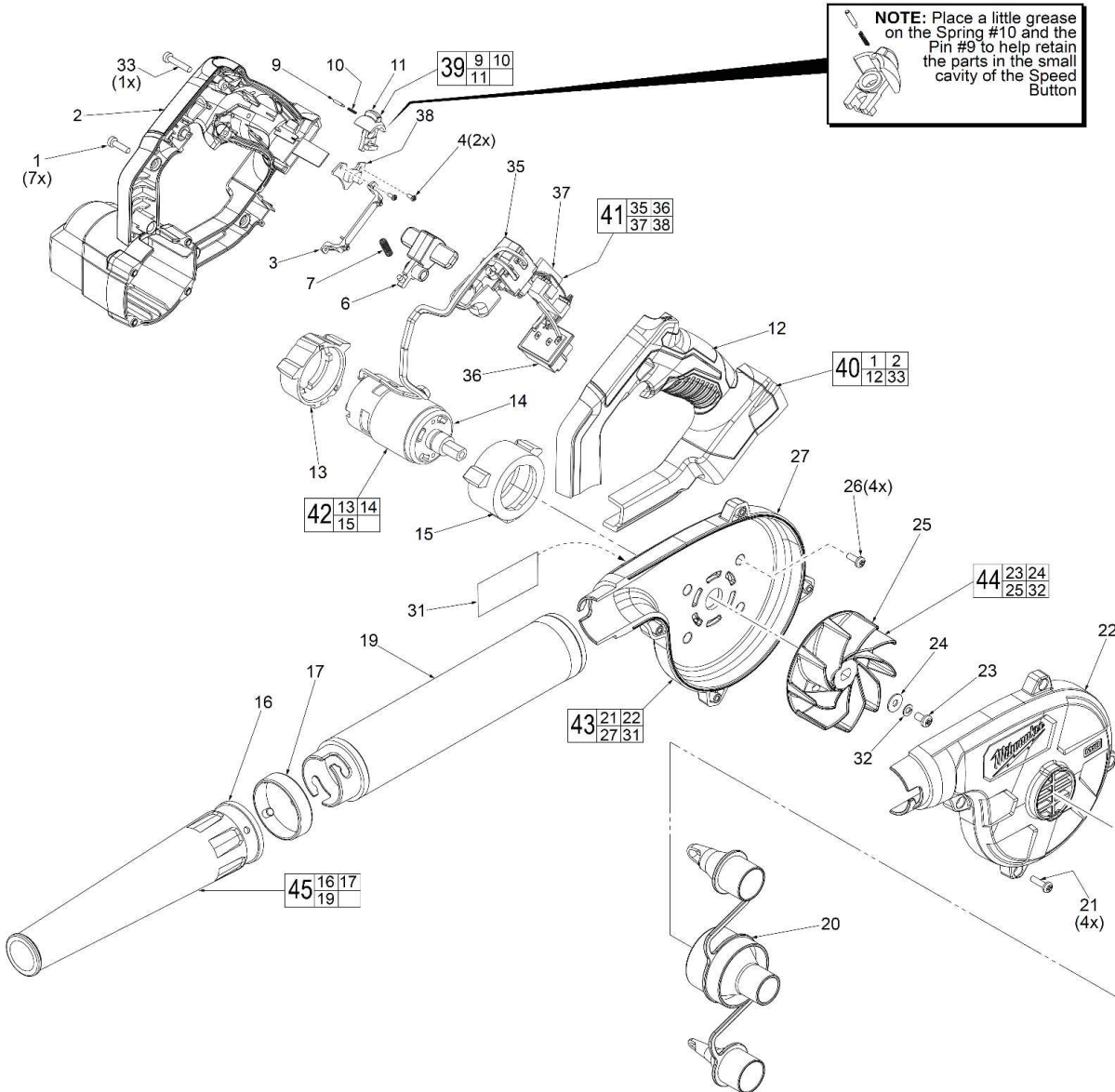
Bulletin Date:

Mar-21

Starting Serial Number:

VERSION A - C2017

EXAMPLE:
00 0 Component Parts (Small #) Are Included
When Ordering The Assembly (Large #).





M18 BBL

SERVICE PARTS LIST

TTI Model Number: 016 042 201

M18 COMPACT BATTERY BLOWER

Bulletin Date:

Mar-21

Starting Serial Number:

VERSION A - C2017

ITEM	PART NUMBER	PART DISCIPTION	QTY (PCS)
1	016042001001	M3 X 9MM SCREW	7
2	-	HANDLE/MOTOR HOUSING HALVE-RIGHT	1
3	016042001028	WIRE TRAP	1
4	016042001002	M2.3 X 6MM SCREW	2
6	016042001035	SWITCH LOCK BUTTON	1
7	016042001004	SWITCH LOCK SPRING	1
9	-	SPEED BUTTON DETENT PIN	1
10	-	SPEED BUTTON SPRING	1
11	-	SPEED BUTTON	1
12	-	HANDLE HOUSING HALVE-LEFT	1
13	016042001007	LOWER MOTOR SUPPORT	1
14	-	MOTOR WITH SPINDLE	1
15	016042001008	UPPER MOTOR SUPPORT	1
16	016042001030	NOZZLE	1
17	016042001029	NOZZLE RING	1
19	016042001011	EXTENSION TUBE	1
20	016042001012	INFLATOR/DEFLATOR VALVES	1
21	016042001016	M4 X 18MM SCREW	4
22	-	FAN HOUSING HALVE-LEFT	1
23	016042001014	M5.0 X 8MM SCREW	1
24	016042001015	WASHER	1
25	-	FAN	1
26	016042001013	M4.0 X 10MM SCREW	4
27	-	FAN HOUSING HALVE-RIGHT	1
31	016042201003	SERVICE NAMEPLATE	1
32	016042001018	LOCK WASHER	1
33	016042001019	M3 X 15MM SCREW	1
35	-	ON-OFF SWITCH	1
36	-	BATTERY CONNECTOR BLOCK	1
37	-	MAIN PCBA	1
38	-	SWITCH PCBA	1
39	016042001006	BLOWER SPEED BUTTON ASSEMBLY	1
40	016042001020	HANDLE/MOTOR HOUSING ASSEMBLY	1
41	016042002008	ELECTRONICS ASSEMBLY	1
42	016042001022	MOTOR ASSEMBLY WITH SPINDLE	1
43	016042001023	FAN HOUSING ASSEMBLY	1
44	016042001024	BLOWER FAN KIT	1
45	016042001032	NOZZLE/EXTENSION ASSEMBLY (NEW)	1
45	016042001025	NOZZLE/EXTENSION ASSEMBLY (OLD)	1



M18 BBL

SERVICE INSTRUCTION

TTI Model Number: 016 042 201

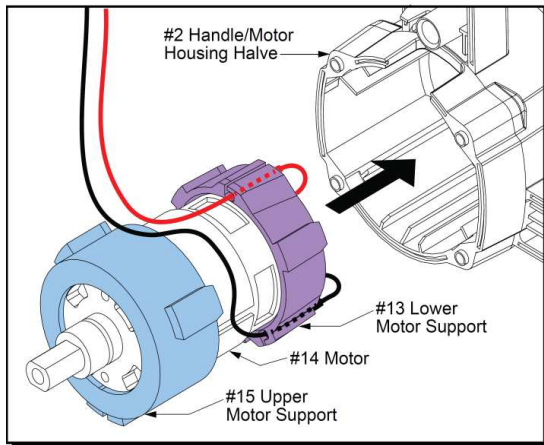
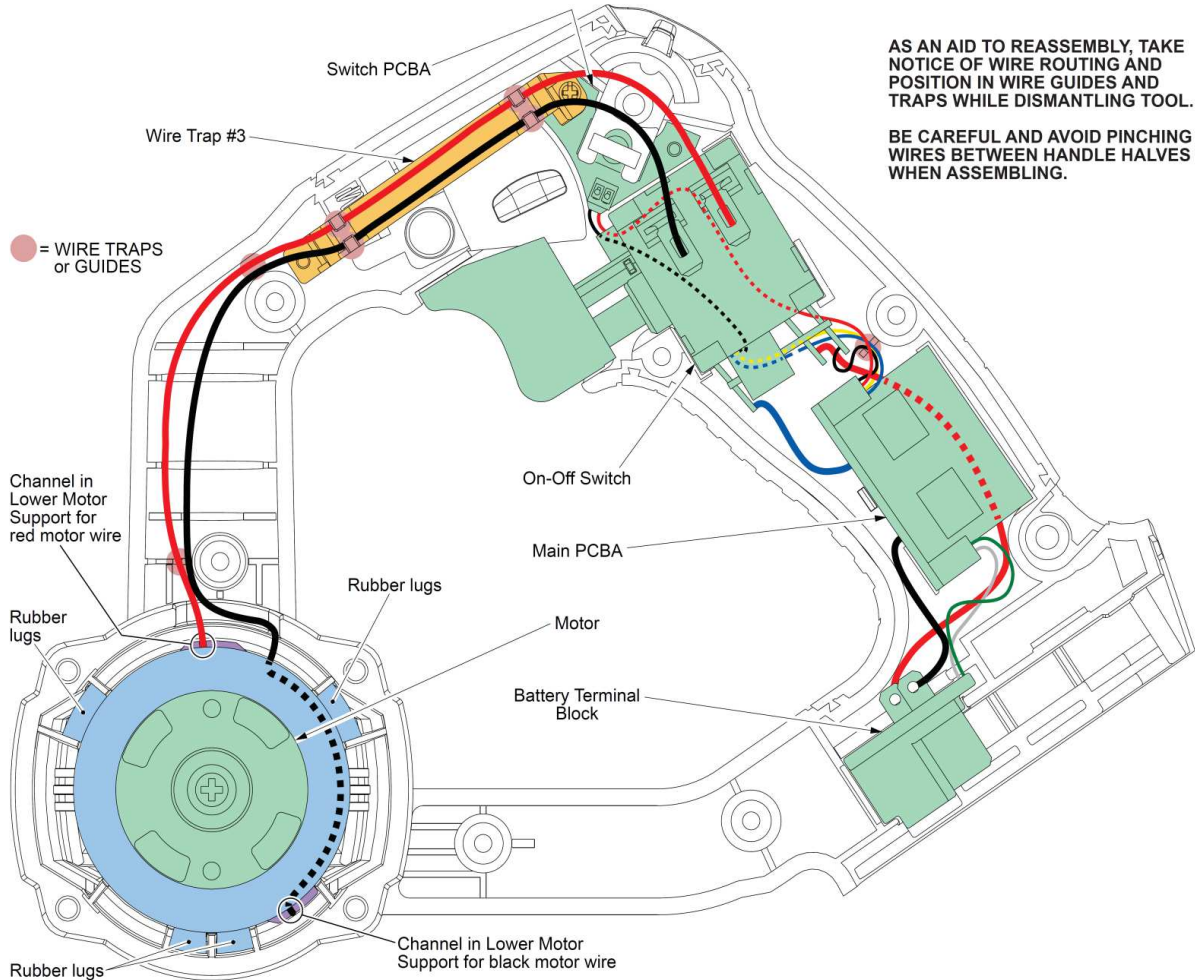
M18 COMPACT BATTERY BLOWER

Bulletin Date:

Mar-21

Starting Serial Number:

VERSION A - C2017



When reinstalling a new Motor Assembly, be sure that the red and black motor leads are fed through the large opening in the back of the Lower Motor Support before soldering wires to the On-Off Switch.

Slide the lower motor support onto the rear of the motor, orienting it as shown and making sure it is firmly pressed into place.

Be sure that the Upper Motor Support is oriented as shown and firmly seated on the spindle end of the Motor.

Press the motor leads into the channels of the lower motor support and remove most of the slack from the rear of the motor. Line up the rubber lugs of the upper and lower motor supports with the channels in the motor cavity of the Handle/Motor Housing Halve. Install the assembly into the handle/motor housing halve.

NOTE:

For ease of installation, the upper motor support can be left off the spindle end of the motor until the lower motor support and motor are pressed into place. At that time, the upper motor support can be assembled onto the motor, orienting the rubber lugs with the corresponding channels in the motor cavity and firmly seated.