



M12 JS

SERVICE PARTS DIAGRAM

TTI Model Number: 018 065 020

M12™ COMPACT JIGSAW

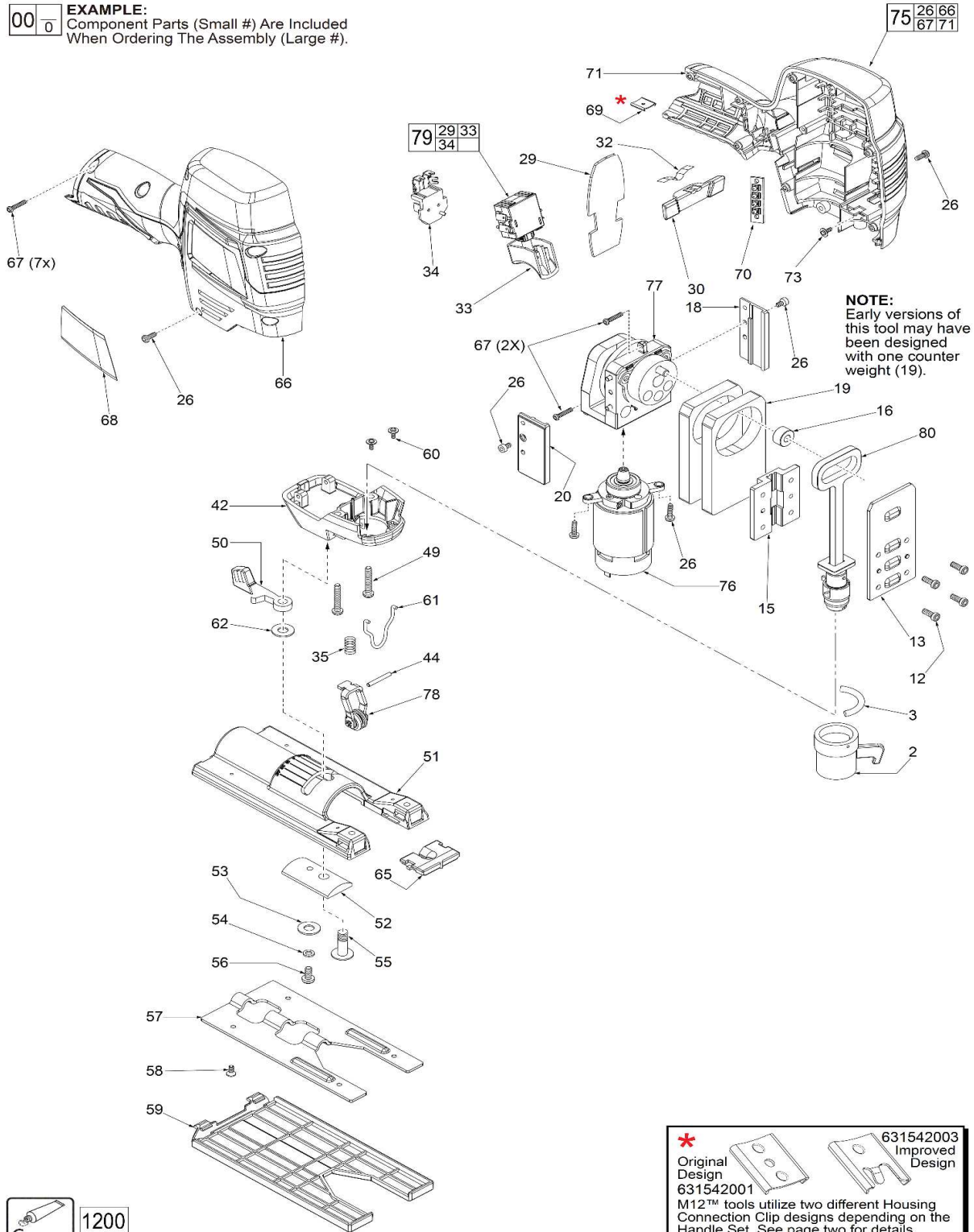
Bulletin Date:

Apr-21

Starting Serial Number:

VERSION A -

EXAMPLE:
Component Parts (Small #) Are Included
When Ordering The Assembly (Large #).





M12 JS

SERVICE PARTS LIST

TTI Model Number: 018 065 020

M12™ COMPACT JIGSAW

Bulletin Date:

Apr-21

Starting Serial Number:

VERSION A -

ITEM	PART NUMBER	PART DISCRIPTION	QTY (PCS)
2	523497001	BARREL CAM	1
3	693014001	SPRING	1
12	661633001	M3.5 X 10MM SCREW	4
13	633870001	SPINDLE BUSHING COVER	1
15	692985001	SPINDLE BUSHING	1
16	692978001	SPINDLE ROLLER BUSHING	1
18	692983001	COUNTER WEIGHT BUSHINGS- LEFT	1
19	633871002	COUNTER WEIGHT (SEE NOTE ABOVE)	2
20	692984001	COUNTER WEIGHT BUSHINGS- RIGHT	1
26	661443001	M3 X 8MM T-10 SCREW	6
29	280197016	PCB ASSEMBLY	1
30	523496001	LOCKOUT LEVER	1
32	633852001	SPRING PLATE	1
33	760469045	SWITCH	1
34	303508004	BATTERY CONNECTOR BLOCK	1
35	693013001	ROLLER BRACKET SPRING	1
42	641794003	LOWER HOUSING	1
44	673034001	2.5 X 22MM PIN	1
49	660024024	M4 X 22MM SCREW	2
50	304665001	SHOE RELEASE LEVER	1
51	641793002	SHOE BODY	1
52	611465001	SHOE CLAMP	1
53	672059001	FLAT WASHER	1
54	670030004	SPRING WASHER	1
55	661634001	1/4-20 X 0.75"UNC-2A SCREW	1
56	660414009	M4 X 9MM T-20 SCREW	1
57	633908001	SHOE INSERT	1
58	661197002	M3 X 0.5 X 7MM SCREW	4
59	523498001	SHOE BASE COVER	1
60	661658001	M2.3 X 0.4 SCREW	2
61	693015001	GUARD WIRE	1
62	631299001	FLAT WASHER	1
65	513409003	ANTI-SPLINTERING DEVICE (NEW)	1
65	513409001	ANTI-SPLINTERING DEVICE (OLD)	1
66	-	HOUSING HALVE -RIGHT(ORDER NEED CONTAIN#71)	1
67	660570005	M3 X 14MM T-10 SCREW	9
68	941050073	SERVICE NAMEPLATE	1

	<h1>M12 JS</h1> <p>SERVICE PARTS LIST</p>	Bulletin Date: Apr-21
	TTI Model Number: 018 065 020 M12™ COMPACT JIGSAW	Starting Serial Number: VERSION A -

ITEM	PART NUMBER	PART DISCRIPTION	QTY (PCS)
69	631542001	HOUSING CONNECTION CLIP	1
70	290304001	LED	1
71	-	HOUSING HALVE-LEFT(ORDER NEED CONTAIN#66)	1
73	660836001	M3 X 8MM SCREW	1
75	201065002	HOUSING SET WITH SCREWS	1
76	201065009	MOTOR ASSEMBLY	1
77	201065004	GEARBOX AND CAM ASSEMBLY	1
78	201065005	ROLLER BRACKET ASSEMBLY	1
79	201065007	SWITCH ASSEMBLY	1
80	201065006	SPINDLE ASSEMBLY	1
1200	-	TYPE J GREASE	1



M12 JS

SERVICE INSTRUCTION

TTI Model Number: 018 065 020

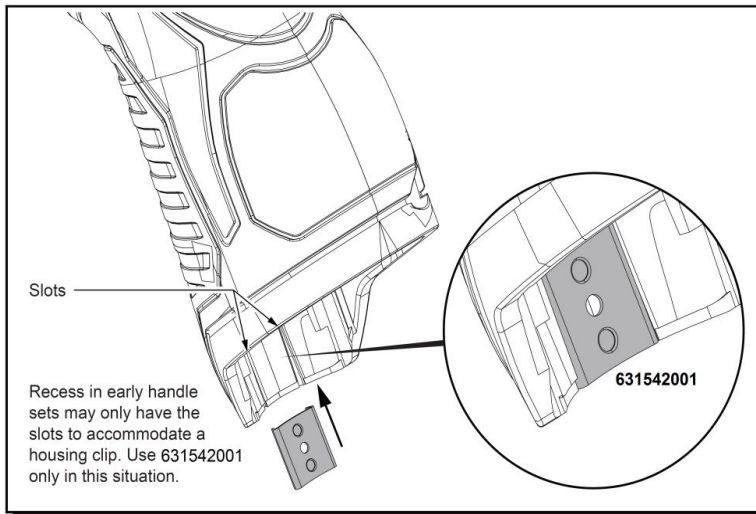
M12™ COMPACT JIGSAW

Bulletin Date:

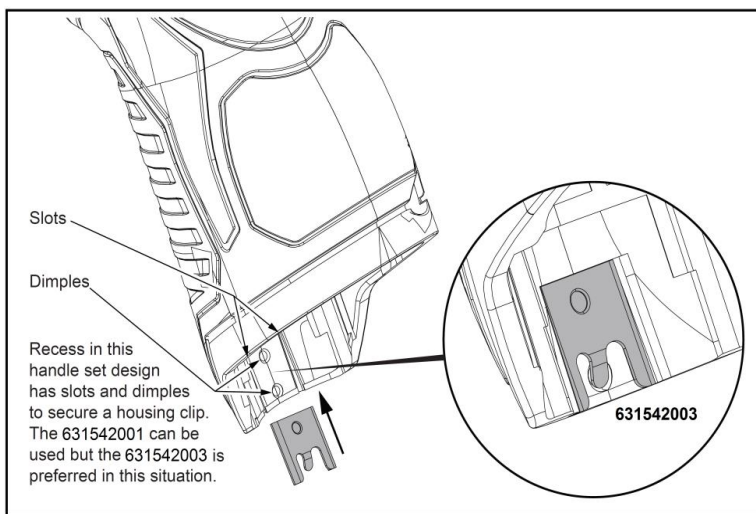
Apr-21

Starting Serial Number:

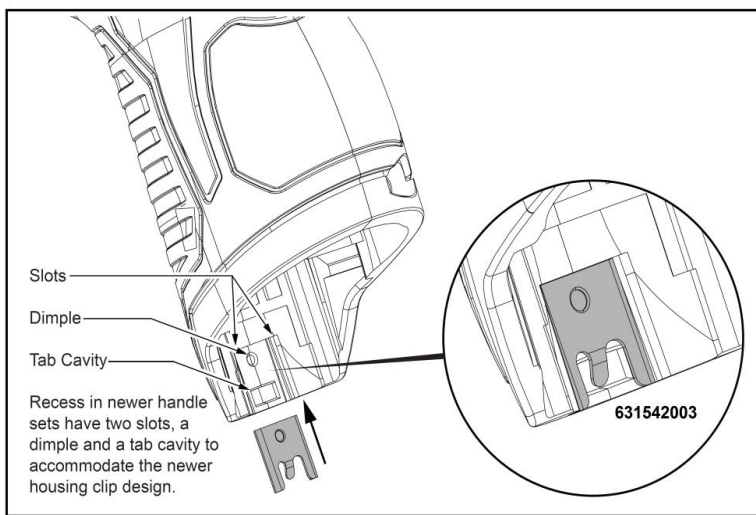
VERSION A -



Early M12™ Handle Sets utilize **Housing Connection Clip No. 631542001**. Install this clip design by aligning the side rails of the clip with the two slots in the handle set. Gently push into place with the aid of a small flat blade screwdriver or a similar instrument. Be sure that the clip is properly seated in both slots and that the clip is flush to sub-flush to the end of the handle set. To remove the clip, use the same small flat blade screwdriver or a similar instrument and push the clip out of the handle set. If the clip is loose or will not stay in place, a needle nose pliers can be used to gently bend/pinch the side rails of the clip. If the clip is damaged do not use, replace with a new 631542001 housing clip.



Updated M12™ Handle Sets utilize **Housing Connection Clips No. 631542001 and 631542003**. (The 631542003 is a preferred upgrade). Install this clip design by aligning the side rails of the clip with the two slots in the handle set. Gently push into place with the aid of a small flat blade screwdriver or a similar instrument. Be sure that the clip is properly seated in both slots and that the tab of the clip snaps down in the round dimpled cavity of the handle set. Be sure that the clip is flush to sub-flush to the end of the handle set. To remove the clip, use the same small flat blade screwdriver or a similar instrument and lift up on the clip tab while pushing the clip out of the handle set. Use a needle nose pliers to gently rebend the clip tab if necessary. If the tab on the clip is damaged during this process and is loose or will not stay in place, replace with a new 631542003 clip.



Newer M12™ Handle Sets utilize **Housing Connection Clip No. 631542003**. Install this clip design by aligning the side rails of the clip with the two slots in the handle set. Gently push into place with the aid of a small flat blade screwdriver or a similar instrument. Be sure that the clip is properly seated in both slots and that the tab of the clip snaps down in the rectangular cavity of the handle set. Be sure that the clip is flush to sub-flush to the end of the handle set. To remove the clip, use the same small flat blade screwdriver or a similar instrument and lift the clip tab out of the cavity while pushing the clip out of the handle set. Use a needle nose pliers to gently rebend the clip tab if necessary. If the tab on the clip is damaged during this process and is loose or will not stay in place, replace with a new 631542003 clip.



M12 JS

SERVICE INSTRUCTION

TTI Model Number: 018 065 020

M12™ COMPACT JIGSAW

Bulletin Date:

Apr-21

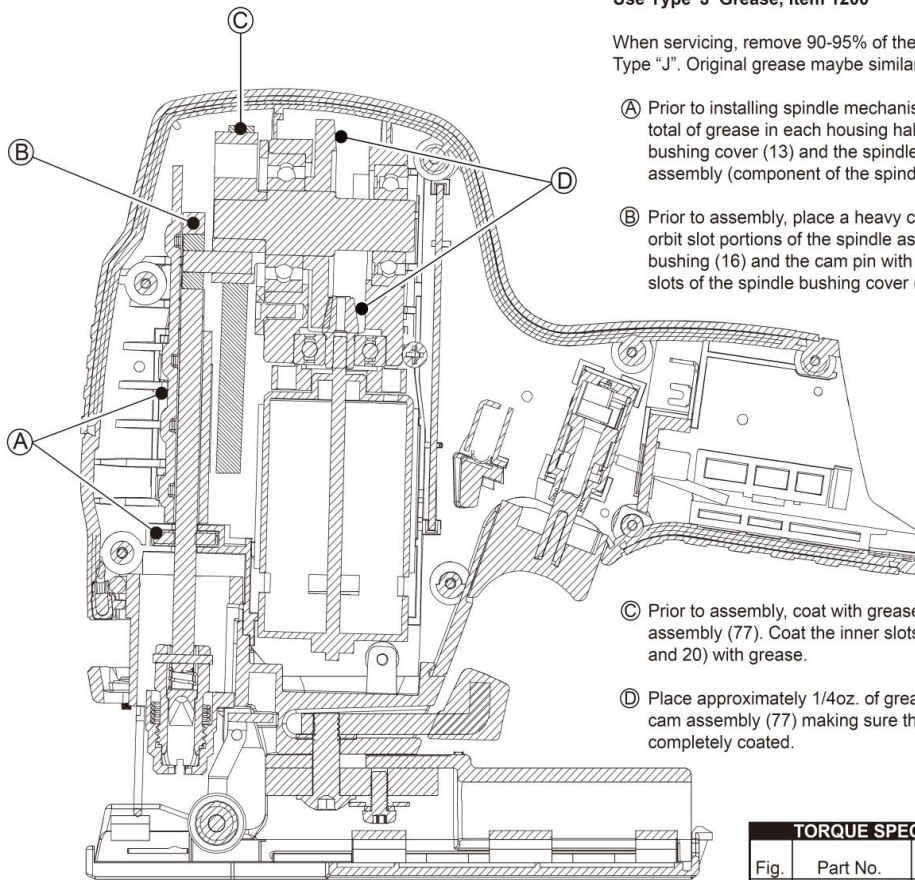
Starting Serial Number:

VERSION A -

LUBRICATION NOTES:

Use Type 'J' Grease, Item 1200

When servicing, remove 90-95% of the existing grease prior to installing Type "J". Original grease maybe similar in color but not compatible with "J".



Ⓐ Prior to installing spindle mechanism, distribute approximately 1/4oz. total of grease in each housing half groove that supports the spindle bushing cover (13) and the spindle bushing (15). Coat the felt seal assembly (component of the spindle assembly (80) with grease.

Ⓑ Prior to assembly, place a heavy coat of grease over the shaft and the orbit slot portions of the spindle assembly (80). Coat the spindle roller bushing (16) and the cam pin with grease. Place grease in the spindle slots of the spindle bushing cover (13) and the spindle bushing (15).

Ⓒ Prior to assembly, coat with grease the cam of the gearcase and cam assembly (77). Coat the inner slots of the counter weight bushings (18 and 20) with grease.

Ⓓ Place approximately 1/4oz. of grease in the middle of the gearbox and cam assembly (77) making sure that the gear and pinion teeth are completely coated.

TORQUE SPECIFICATIONS			
Fig.	Part No.	Min. (Nm)	Max. (Nm)
12	661633001	1.47	1.80
26	661443001	0.68	0.90
49	660024024	1.24	1.58
55	661634001	2.37	3.39
56	660414009	1.58	1.80
58	661197002	0.34	0.68
60	661658001	0.23	0.57
73	660836001	0.23	0.45



M12 JS

SERVICE INSTRUCTION

TTI Model Number: 018 065 020

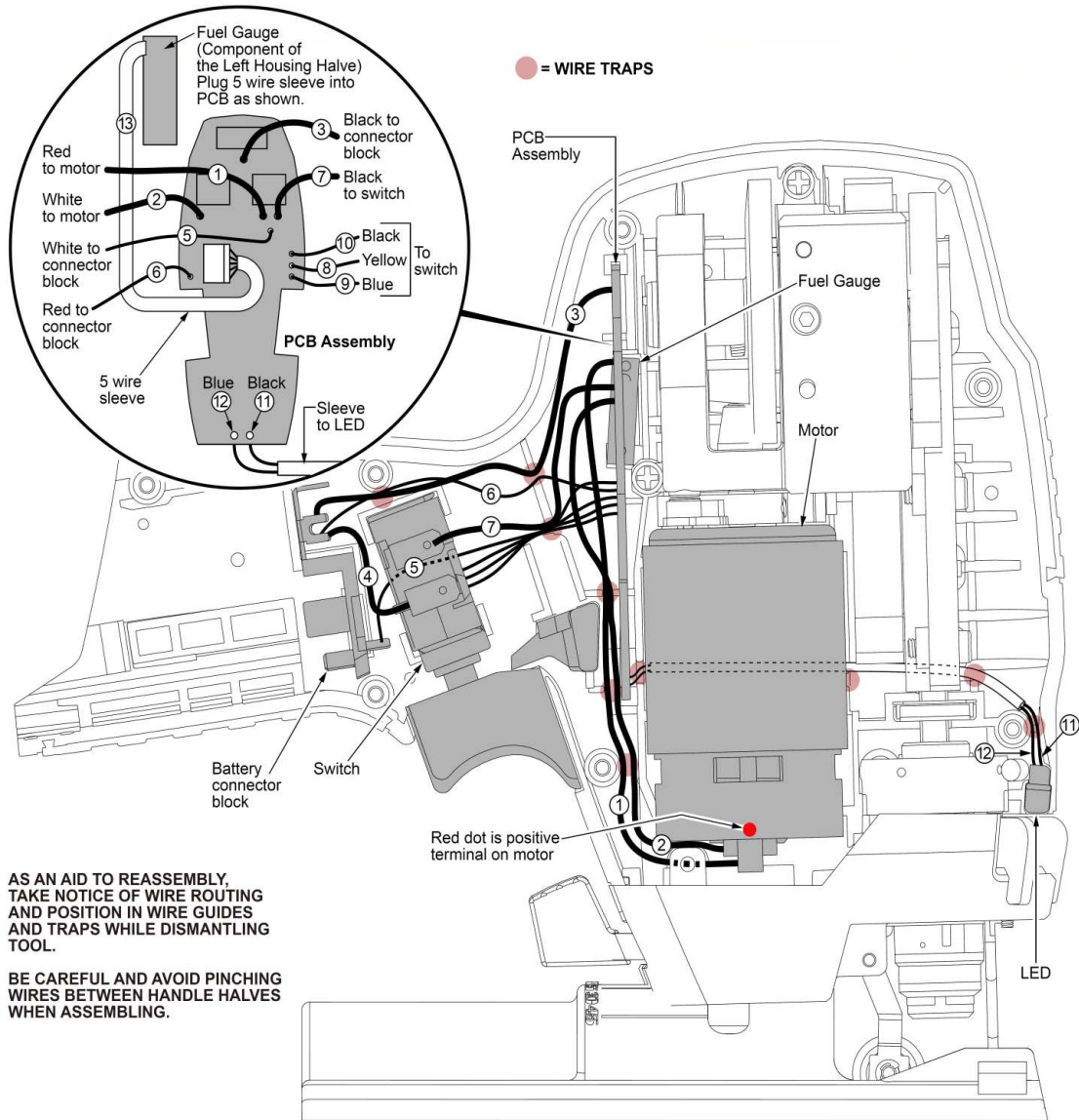
M12™ COMPACT JIGSAW

Bulletin Date:

Apr-21

Starting Serial Number:

VERSION A -



AS AN AID TO REASSEMBLY, TAKE NOTICE OF WIRE ROUTING AND POSITION IN WIRE GUIDES AND TRAPS WHILE DISMANTLING TOOL.

BE CAREFUL AND AVOID PINCHING WIRES BETWEEN HANDLE HALVES WHEN ASSEMBLING.

WIRING SPECIFICATIONS

Wire No.	Wire Color	Origin or Gauge	Length	Terminals, Connectors and 1 or 2 End Wire Preparation
1	Red	----	----	Component of the switch assembly. Route from PCBA and solder to motor terminal with red dot.
2	White	----	----	Component of the switch assembly. Route from PCBA and solder to the other motor terminal.
3	Black	----	----	Component of the switch assembly. Runs from PCBA to the battery connector block.
4	Red	----	----	Component of the switch assembly. Runs from switch to the battery connector block.
5	White	----	----	Component of the switch assembly. Runs from PCBA to the battery connector block.
6	Red	----	----	Component of the switch assembly. Runs from PCBA to the battery connector block.
7	Black	----	----	Component of the switch assembly. Runs from PCBA to the switch.
8	Yellow	----	----	Component of the switch assembly. Runs from PCBA to the switch.
9	Blue	----	----	Component of the switch assembly. Runs from PCBA to the switch.
10	Black	----	----	Component of the switch assembly. Runs from PCBA to the switch.
11	Black	----	----	Component of the switch assembly. Sleeved with #12 and runs from PCBA to the LED.
12	Blue	----	----	Component of the switch assembly. Sleeved with #11 and runs from PCBA to the LED.
13	5 wires	----	----	Component of the housing set (specifically the left half). Plug 5 wire harness into PCBA as shown.