



M12 BPS

SERVICE PARTS DIAGRAM

TTI Model Number: 018 109 013, 014, 018

M12 SPOT POLISHER

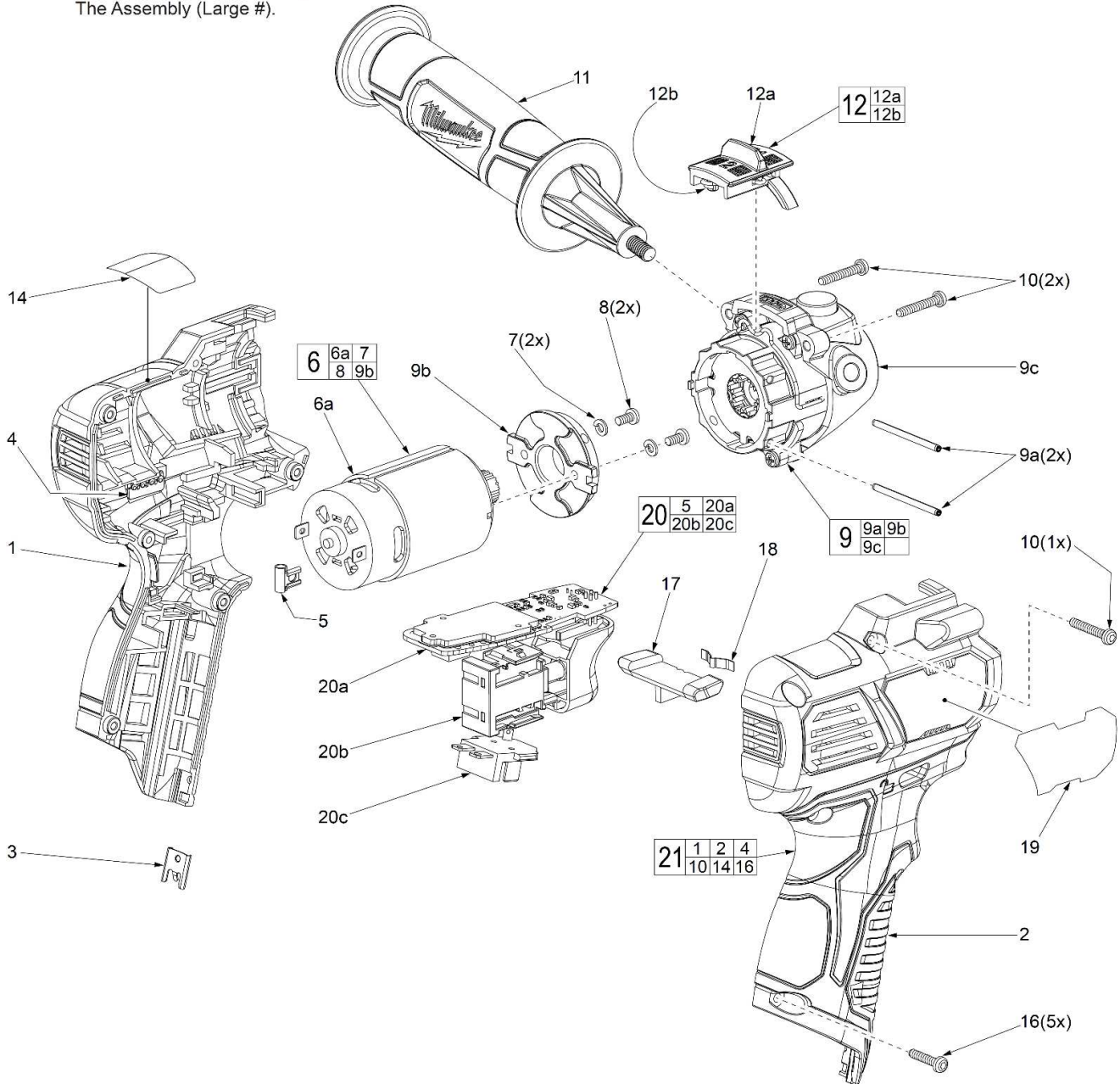
Bulletin Date:

Jun-20

Starting Serial Number:

VERSION A - H2015

EXAMPLE:
00 0 Component Parts (Small #)
Are Included When Ordering
The Assembly (Large #).



NOTES:
Service replacement gearcase assembly (9) comes with a motor mount plate (9b) that must be removed and discarded when servicing. A motor mount plate already exists on the motor assembly (6).





M12 BPS

SERVICE PARTS LIST

TTI Model Number: 018 109 013, 014, 018

M12 SPOT POLISHER

Bulletin Date:

Jun-20

Starting Serial Number:

VERSION A - H2015

ITEM	PART NUMBER	PART DESCRIPTION	QTY (PCS)
1	-	HOUSING SUPPORT, LEFT	1
2	-	HOUSING COVER, RIGHT	1
3	631542003	HOUSING CLIP	1
4	591339001	LIGHT PIPE	1
5	635223001	TERMINAL CLIP (SHOWN WITHOUT WIRE)	1
6	202882001	MOTOR ASSEMBLY	1
6a	740330001	MOTOR WITH PINION	1
7	670028003	SPRING WASHER	2
8	660211062	M3 X 6MM SCREW	2
9	202985001	GEARBOX ASSEMBLY	1
9a	694036001	MOTOR MOUNT PIN	2
9b	525946001	MOTOR MOUNT PLATE	1
9c	642154001	GEARBOX/FRONT HOUSING	1
10	660230017	M3 X 18MM SCREW	3
11	306310001	SIDE HANDLE	1
12	202883001	SPEED SELECTOR ASSEMBLY	1
12a	351943001	SPEED SELECTOR	1
12b	693613001	TORSION SPRING	1
14	941300027	WARNING LABEL	1
15	941312012	FUEL GAUGE LABEL (NOT SHOWN)	1
16	660570005	M3 X 14MM SCREW	5
17	526630001	LOCKING SHUTTLE	1
18	633852001	SPRING PLATE	1
19	941048053	SERVICE NAMEPLATE	1
20	202881002	ELECTRONICS ASSEMBLY	1
20a	280197022	PCBA	1
20b	760438033	SWITCH	1
20c	303508006	BATTERY TERMINAL CONNECTOR BLOCK	1
21	202884001	HANDLE KIT	1
22	902033043	NYLON BAG 018109014 VERSION	1
22	301696004	DYNACASE ASSEMBLY 018109018 VERSION	1
23	202886001	5 PIECE ACCESSORY KIT (NOT SHOWN)	1
		CONSISTING OF:	
	902904001	3" WOOL PAD WITH BACK RECESS	1
	980039001	3" WHITE FOAM PAD	1
	980039002	3" YELLOW FOAM PAD	1
	306288001	3" BACKING PAD WITH M9x0.75 THREAD	1
	306289001	2" BACKING PAD WITH M9x0.75 THREAD	1



M12 BPS

SERVICE INSTRUCTION

TTI Model Number: 018 109 013, 014, 018

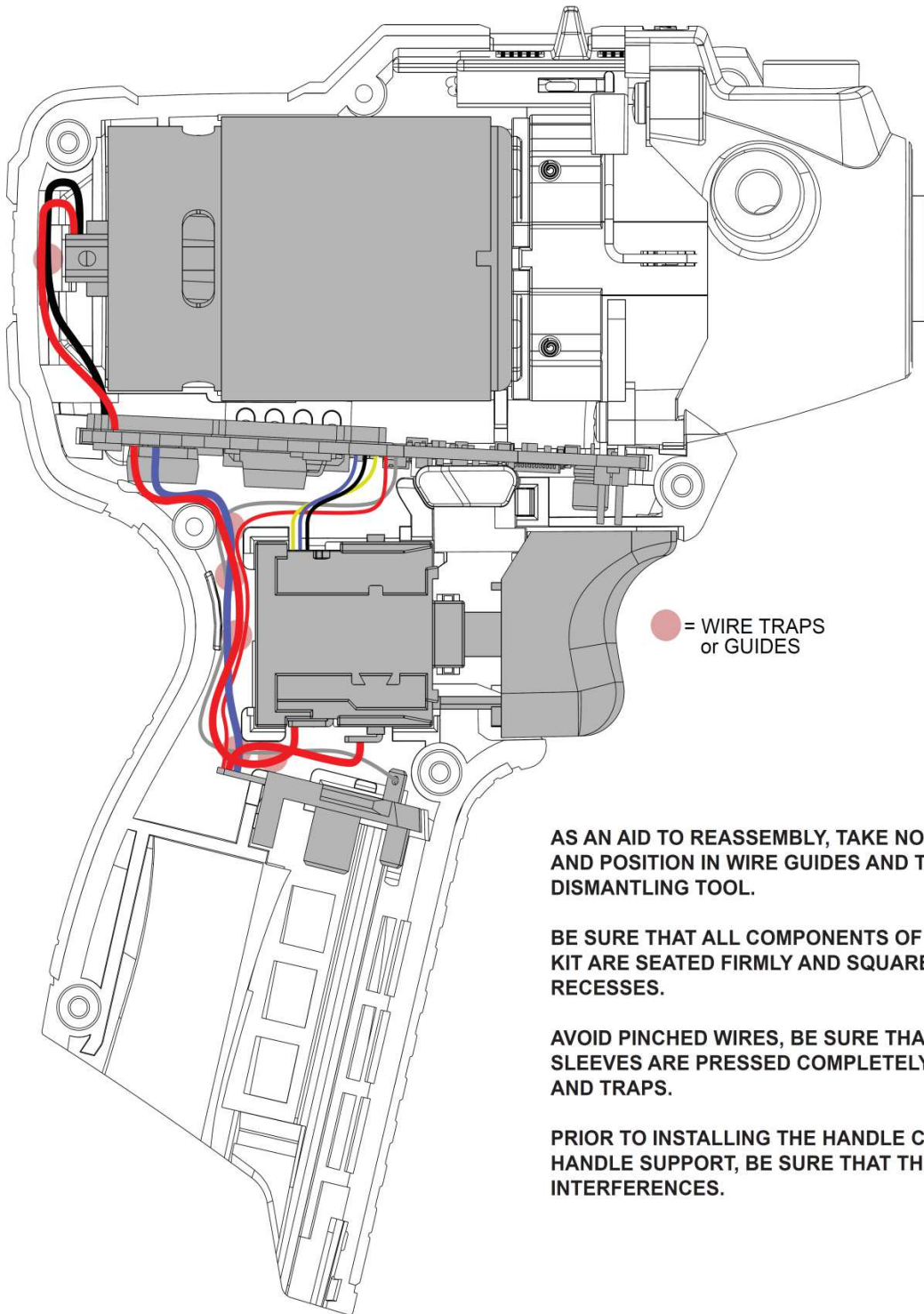
M12 SPOT POLISHER

Bulletin Date:

Jun-20

Starting Serial Number:

VERSION A - H2015



AS AN AID TO REASSEMBLY, TAKE NOTICE OF WIRE ROUTING AND POSITION IN WIRE GUIDES AND TRAPS WHILE DISMANTLING TOOL.

BE SURE THAT ALL COMPONENTS OF THE ELECTRONICS KIT ARE SEATED FIRMLY AND SQUARELY IN THE HANDLE RECESSES.

AVOID PINCHED WIRES, BE SURE THAT ALL WIRES AND SLEEVES ARE PRESSED COMPLETELY DOWN IN WIRE GUIDES AND TRAPS.

PRIOR TO INSTALLING THE HANDLE COVER ONTO THE HANDLE SUPPORT, BE SURE THAT THERE ARE NO INTERFERENCES.